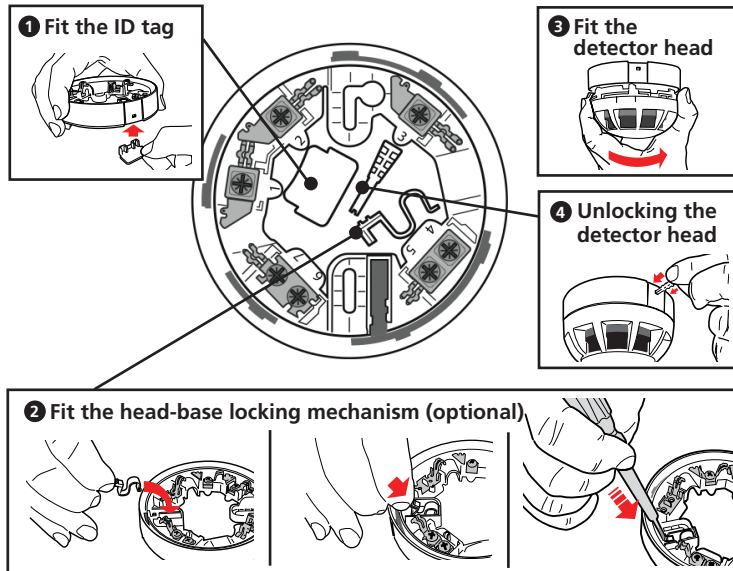




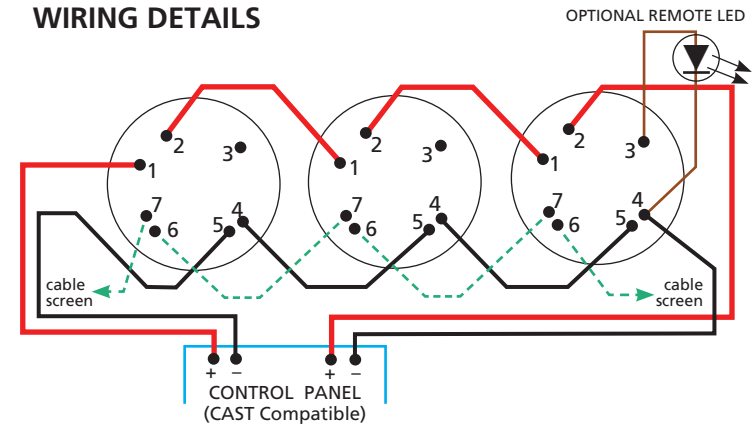
Context Plus

CA408/CON DETECTOR BASE

Remove the optional identification and security tags from the centre of the base and use as shown in steps 1, 2 & 4. See overleaf for wiring details.



WIRING DETAILS



- Correct polarity must be observed.
- Do not mount bases on uneven surfaces.
- Screened cables are recommended for optimum performance.
- Terminals can accept 0.25 to 2.5mm² wiring.
- Optional connection to a BF318 Remote LED.

Contact No.	Function
1	+Ve IN (analogue switch)
2	+Ve OUT (analogue switch)
3	Remote LED +Ve
4	0V
5	0V
6	Screen
7	Screen

Context Plus Limited, Progress House, Newby Industrial Estate, Newby Road, Hazel Grove, Stockport, SK7 5DA, United Kingdom.

Approved Document No. DFU0002410 Rev 1

11/10/2023