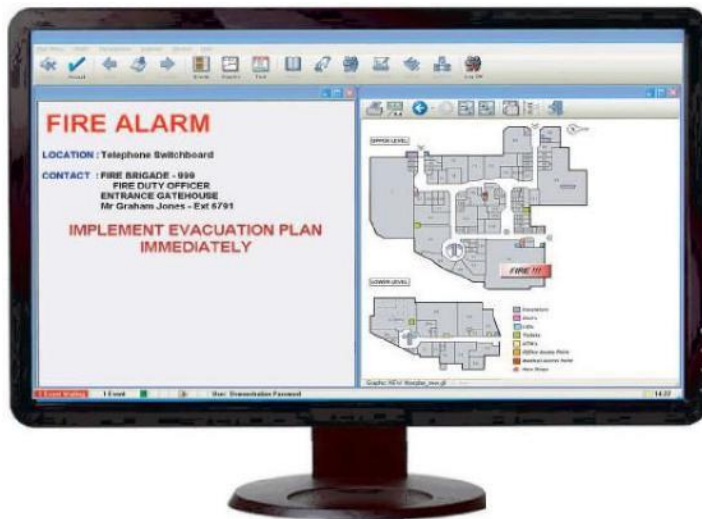


ZG Graphical Interface Solutions

for the ZFP range of fire alarm panels

Product codes: ZG1, ZG2, ZG3, ZG4



Key Features:

- ***Integrate one or more ZFP panels onto one easy-to-use graphical interface package***
- ***Develop an extensive alarm audit trail***
- ***Report and control alarm systems from one or more locations***
- **Produce alarm history reports and trend analysis**
- **Create cause and effects between different and unnetworked systems**
- **Optional interfacing to other manufacturers' equipment**
- **Optional TCP/IP functionality allows connection to remote PC and other TCP/IP nodes**

<http://www.contextplus.co.uk/>

E: contextplus@xportsales.com T: +44 161 257 2541 Fx: +44 161 225 8817

Context Plus Ltd | PROGRESS HOUSE, NEWBY ROAD | HAZEL GROVE
| STOCKPORT | | SK7 5DA | UK

ZG Graphical Interface Solutions

for the ZFP range of fire alarm panels

Product codes: ZG1, ZG2, ZG3, ZG4



- 1. Need a graphical front end for our ZFP range of touchscreen controlled analogue addressable fire panels? Look no further than our new ZG range of graphical interface solutions.*
- 2. With a host of packages available, you can easily set up anything from a single panel graphical mimic type solution to a complex alarm management system connected to many Context Plus panels.*
- 3. Our new ZG solutions provide an ideal way to view critical events, process alarms, keep secure system logs and even integrate new or legacy systems on single or multiple site operations.*
- 4. If you are struggling with multiple system reporting, consider using our ZG solution to integrate standalone systems into one straightforward, manageable and convenient system without compromising individual system integrity.*

<http://www.contextplus.co.uk/>

E: contextplus@xportsales.com T: +44 161 257 2541 Fx: +44 161 225 8817

Context Plus Ltd | PROGRESS HOUSE, NEWBY ROAD | HAZEL GROVE
| STOCKPORT | | SK7 5DA | UK

ZG Graphical Interface Solutions

for the ZFP range of fire alarm panels

Product codes: ZG1, ZG2, ZG3, ZG4

ZG1 : ZFP 1 to 2 Panel Graphics Interface (dongle and software) Provides accept, silence, reset, enable & disable controls. Presentation can be full screen text, running events list and graphical site plan. A multi-level picture representation of a site or building can be created. (Graphical site plan is possible with this software). Includes TCP/IP manager allowing connection to remote PC's & other TCP/IP nodes- ONE ZG1 REQUIRED PER NETWORKED PC. Graphics Interface with Groups Enabled (dongle and software). Suitable for Single ZFP panel and for Two ZFP panels networked together.

ZG2 : ZFP 1 to 5 Panel Graphics Interface (dongle and software) Provides accept, silence, reset, enable & disable controls. Presentation can be full screen text, running events list and graphical site plan. A multi-level picture representation of a site or building can be created. (Graphical site plan is possible with this software). Includes TCP/IP manager allowing connection to remote PC's & other TCP/IP nodes- ONE ZG2 REQUIRED PER NETWORKED PC. Graphics Interface with Groups Enabled (dongle and software). Suitable for up to Five ZFP panels networked together.

ZG3 : ZFP 1 to 15 Panel Graphics Interface (dongle and software) Provides accept, silence, reset, enable & disable controls. Presentation can be full screen text, running events list and graphical site plan. A multi-level picture representation of a site or building can be created. Includes TCP/IP manager allowing connection to remote PC's & other TCP/IP nodes- ONE ZG3 REQUIRED PER NETWORKED PC. (Graphical site plan is possible with this software). Graphics Interface with Groups Enabled (dongle and software). Suitable for up to Fifteen ZFP panels networked together.

ZG4 : ZFP 1-99 Panels Graphics Interface Price includes dongle and one ZFP network manager. Provides accept, silence, reset, enable & disable controls. Presentation can be full screen text, running events list and graphical site plan. Includes TCP/IP manager allowing connection to remote PC's & other TCP/IP nodes - ONE ZG4 REQUIRED PER NETWORKED PC. (Graphical site plan is possible with this software). Graphics Interface with Groups Enabled (dongle and software). Suitable for up to 99 ZFP panels networked together.

ZGSlave : Slave Licence Full monitoring and Reports, No Panel Control- maximum 20 per master. View Graphics, View current events and history and Print reports.

<http://www.contextplus.co.uk/>

E: contextplus@xportsales.com T: +44 161 257 2541 Fx: +44 161 225 8817

Context Plus Ltd | PROGRESS HOUSE, NEWBY ROAD| HAZEL GROVE

| STOCKPORT || SK7 5DA | UK

ZG Graphical Interface Solutions

for the ZFP range of fire alarm panels

Product codes: ZG1, ZG2, ZG3, ZG4

What is this Fire Graphics Package for?

- View your building plans using graphics with device-specific details.
 - Control alarm panels remotely
 - Simple to use with accessible support if needed
 - Monitor analogue values*
 - Displays clear & concise action messages in the event of an activation
-

Fire Event Analysis

Where fires occur, proving compliance with regulations and analysing the lead-up to the event is important. With AMX, users can access:

A detailed audit trail of events

Proof of system servicing and weekly tests

Categorised events for trend analysis

Remote Integration

If you have multiple sites with varying fire alarm panel manufacturers, we can help. ZG Graphics can give you complete visibility and control by:

- Linking multiple remote sites together
- Linking multiple brands of panel together
 - Connecting multiple alarm systems

<http://www.contextplus.co.uk/>

E: contextplus@xportsales.com T: +44 161 257 2541 Fx: +44 161 225 8817

Context Plus Ltd | PROGRESS HOUSE, NEWBY ROAD | HAZEL GROVE
| STOCKPORT | | SK7 5DA | UK

ZG Graphical Interface Solutions

for the ZFP range of fire alarm panels

Product codes: ZG1, ZG2, ZG3, ZG4

Aids Compliance

Track the status of systems to provide a comprehensive audit trail

Integrates all systems

Consolidate different manufacturers life safety systems

Manages alarm activations

Receive clear and concise instructions when alerts occur

Reduces search times

Use maps to precisely locate activations and failures

Control systems remotely

More easily manage system devices from a convenient location

Audit incidents

Review comprehensive post-event data

<http://www.contextplus.co.uk/>

E: contextplus@xportsales.com T: +44 161 257 2541 Fx: +44 161 225 8817

Context Plus Ltd | PROGRESS HOUSE, NEWBY ROAD| HAZEL GROVE
|STOCKPORT || SK7 5DA | UK